

SURFACE WATER PROJECTS FY 2005-2006

PROJECT SUMMARY (dollars in \$000)		Prior Years	Total Appro.					Est. Total	
			05-06	thru 05-06	06-07	07-08	08-09		09-10
C500103	R/R Industry Track Relocation	\$ 716	\$ 499	\$ 1,215	\$ -	\$ -	\$ -	\$ -	\$ 1,215
C500704	Dredge Spoils Reclamation Plan	210	-	210	-	-	-	-	210
C500904	H Street Storm Drain	185	-	185	1,529	-	-	-	1,714
C500705	Lakeville Channel Improvement	210	5	215	-	-	-	-	215
C500805	River Habitat Restoration	155	105	260	525	525	525	-	1,835
C500303	River Plan - Denman Phase 1 & 2	1,687	100	1,787	-	-	-	-	1,787
C500804	Flood Drainage Improvements	53	73	126	300	330	315	315	1,386
C500b06	River Plan-Denman Future Phase	-	-	-	-	53	368	-	421
C500c06	River Plan - Corona Reach	-	-	-	-	53	420	210	683
TOTAL		\$ 3,216	\$ 782	\$ 3,998	\$ 2,354	\$ 961	\$ 1,628	\$ 525	\$ 9,466

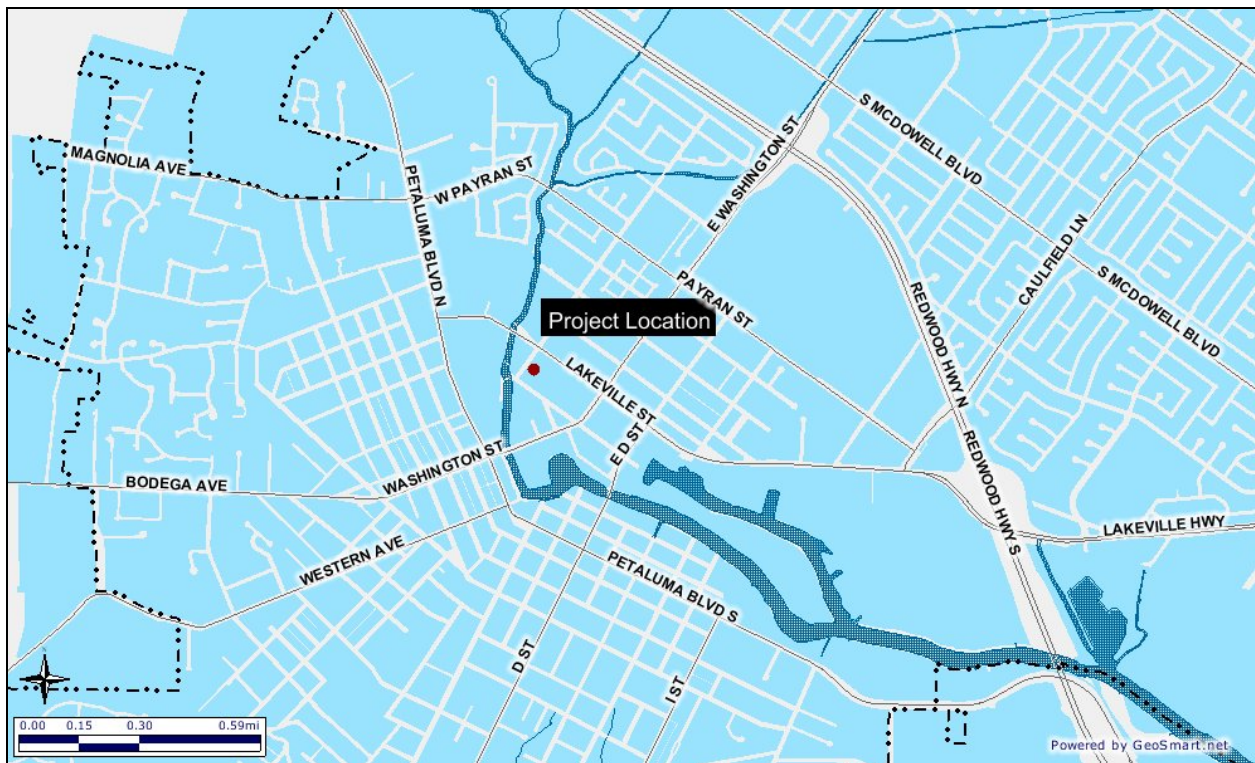
SOURCES (dollars in \$000)		Prior Years	Total Appro.					Est. Total	
			05-06	thru 05-06	06-07	07-08	08-09		09-10
	Storm Drainage Impact Fees	\$ 1,750	\$ 782	\$ 2,532	\$ 898	\$ 961	\$ 1,628	\$ 525	\$ 6,544
	SCWA Zone 2A Assessments	176	-	176	1,456	-	-	-	1,632
	2001 State DWR Grant	206	-	206	-	-	-	-	206
	2002 State DWR Grant	1,084	-	1,084	-	-	-	-	1,084
TOTAL		\$ 3,216	\$ 782	\$ 3,998	\$ 2,354	\$ 961	\$ 1,628	\$ 525	\$ 9,466

Project Title: Railroad Industry Track Relocation

Project #: C500103

There are two railroad bridges impeding flows in the Petaluma River. The Mainline Railroad Bridge has been replaced. The Drill Line Railroad Bridge, currently not in operation, serves only one parcel (Dairyman's Feed). Replacement of the Drill Line Railroad Bridge is prohibitively expensive. This project provides a cost-effective alternative by replacing the existing Drill Line Railroad Bridge with an industrial lead to serve Dairyman's Feed. The lead would begin on the southeasterly side of the river so no bridge would be necessary. The existing Drill Line Bridge would be demolished after construction of the lead track. The City costs include right-of-way acquisition and design. The federal project will reimburse the City 65% of the design costs.

The right-of-way acquisition and design of the industrial lead will be completed in FY 2004-2005.



City of Petaluma, California
 Fiscal Year 2006 Budget

R/R Industry Track Relocation C500103

USES (dollars in \$000)	Prior	Total Appr.		06-07	07-08	08-09	09-10	Est. Total
	Years	05-06	thru 05-06					
55011 CIP Intragovernment Overhead	\$ 33	\$ 24	\$ 57	\$ -	\$ -	\$ -	\$ -	\$ 57
54153 Administration	-	-	-	-	-	-	-	-
54150 Planning and Environmental Services	1	-	1	-	-	-	-	1
54110 Design Services	25	75	100	-	-	-	-	100
54120 Legal Counsel	-	-	-	-	-	-	-	-
62110 Land and Easements	657	125	782	-	-	-	-	782
54152 Construction Management Services	-	25	25	-	-	-	-	25
54151 Construction Contracts	-	250	250	-	-	-	-	250
57310 Contingency	-	-	-	-	-	-	-	-
TOTAL	\$ 716	\$ 499	\$ 1,215	\$ -	\$ -	\$ -	\$ -	\$ 1,215

SOURCES (dollars in \$000)	Prior	Total Appr.		06-07	07-08	08-09	09-10	Est. Total
	Years	05-06	thru 05-06					
Storm Drainage Impact Fees	\$ 716	\$ 499	\$ 1,215	\$ -	\$ -	\$ -	\$ -	\$ 1,215
TOTAL	\$ 716	\$ 499	\$ 1,215	\$ -	\$ -	\$ -	\$ -	\$ 1,215

FUTURE MAINTENANCE OF CAPITAL IMPROVEMENT PROJECT

This project is part of the Payran Reach Flood Control project that is being funded by the Army Corps of Engineers. The Flood and Surface Water Impact Fee are providing initial funding. Maintenance of the project will be the responsibility of the railroad.

CALCULATION OF FUTURE SAVINGS

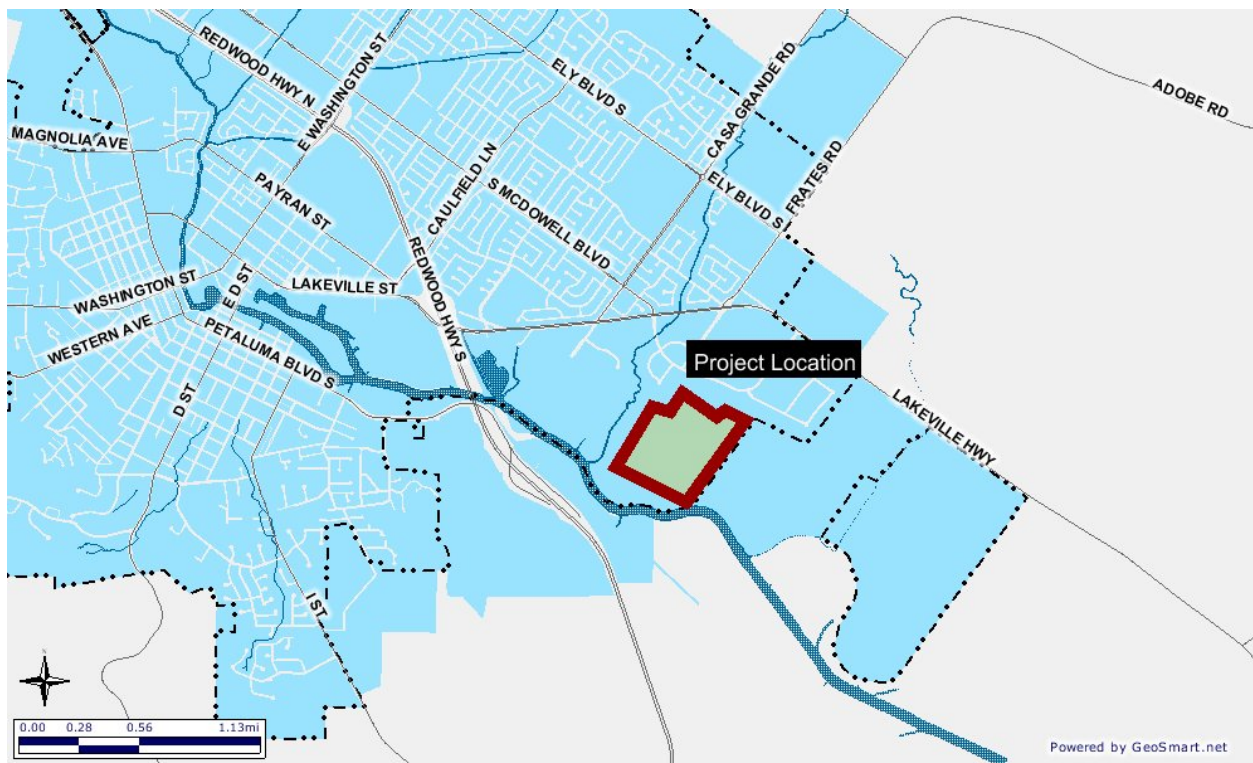
Unknown costs savings due to the redesign of the railroad cannot be calculated at this time. It could provide savings in the future related to flood mitigation.

Project Title: Petaluma River Dredge Spoils Reclamation Plan

Project #: C500704

For many years, the City has benefited from periodic maintenance dredging of the Petaluma River by the U.S. Army Corps of Engineers. The purpose of this dredging is to maintain sufficient channel depth for commercial and recreational navigation on the River. This periodic dredging of the channel has also contributed greatly to flood control by maintaining sufficient hydraulic capacity for conveying storm flows. The City owns and operates a dredge spoils disposal and reclamation site at Shollenberger Park for stockpiling the sediments removed from the River. This project will identify the long-term dredging needs to maintain sufficient channel capacity and develop a management plan for continued operation of the dredge spoils reclamation site. This plan is expected to include specific implementation measures for future dredging of the Payran Flood Control Project and potential improvements to the dredge spoils disposal site.

Planning and design will be completed, and implementation of the permanent dredge spoils facilities will begin in FY 2005-2006.



City of Petaluma, California
Fiscal Year 2006 Budget

Dredge Spoils Reclamation Plan C500704

USES (dollars in \$000)	Prior	Total Appro.					Est.	
	Years	05-06	thru 05-06	06-07	07-08	08-09	09-10	Total
55011 CIP Intragovernment Overhead	\$ 10	\$ -	\$ 10	\$ -	\$ -	\$ -	\$ -	\$ 10
54153 Administration	-	-	-	-	-	-	-	-
54150 Planning and Environmental Services	150	-	150	-	-	-	-	150
54110 Design Services	50	-	50	-	-	-	-	50
54120 Legal Counsel	-	-	-	-	-	-	-	-
62110 Land and Easements	-	-	-	-	-	-	-	-
54152 Construction Management Services	-	-	-	-	-	-	-	-
54151 Construction Contracts	-	-	-	-	-	-	-	-
57310 Contingency	-	-	-	-	-	-	-	-
TOTAL	\$ 210	\$ -	\$ 210	\$ -	\$ -	\$ -	\$ -	\$ 210

SOURCES (dollars in \$000)	Prior	Total Appro.					Est.	
	Years	05-06	thru 05-06	06-07	07-08	08-09	09-10	Total
Storm Drainage Impact Fees	\$ 210	\$ -	\$ 210	\$ -	\$ -	\$ -	\$ -	\$ 210
TOTAL	\$ 210	\$ -	\$ 210	\$ -	\$ -	\$ -	\$ -	\$ 210

FUTURE MAINTENANCE OF CAPITAL IMPROVEMENT PROJECT

This is an ongoing responsibility of the City. The impact fee is providing funds since dredging of the Petaluma River provides protection against flooding.

After the initial completion of the dredge spoils facility, ongoing maintenance will require funding from the impact fee fund. That fund is dependant on development and could be impacted by a slowdown in development in the City. If funds are not available from that source, responsibility may fall to the General Fund.

CALCULATION OF FUTURE SAVINGS

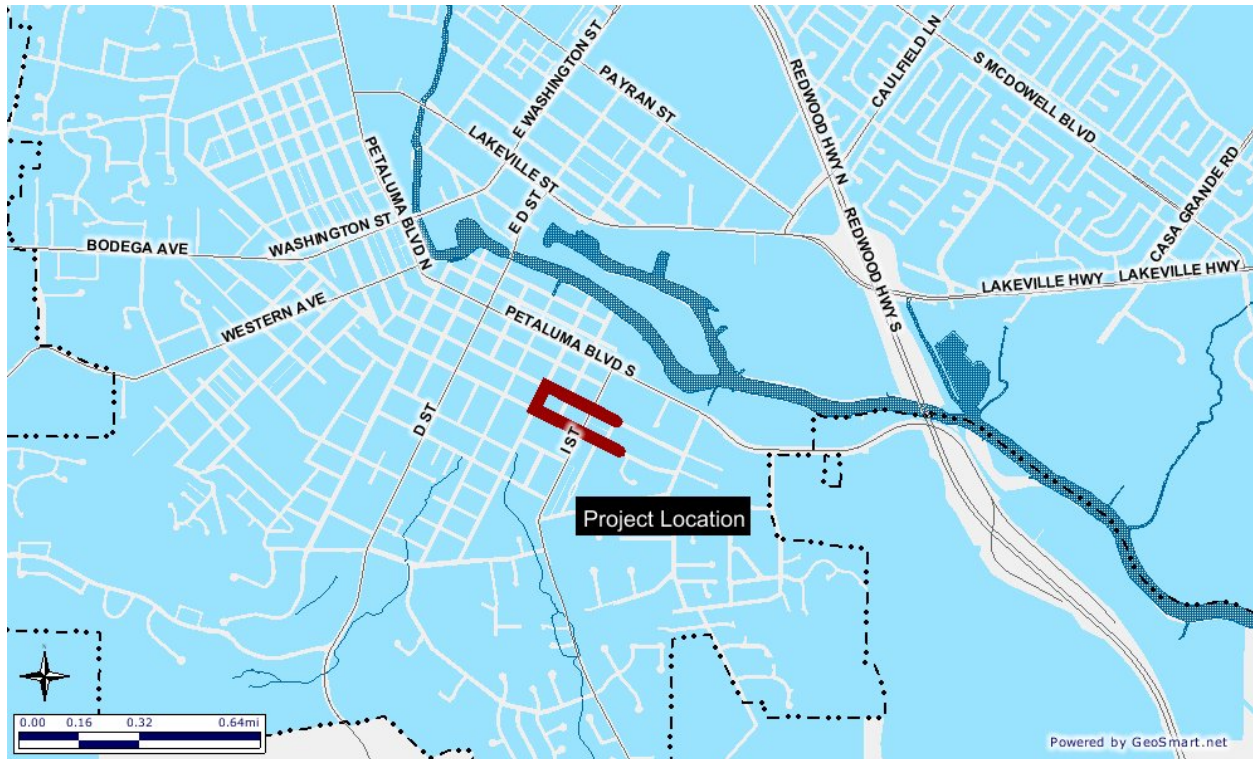
Future savings, especially in the potential to avoid flooding, cannot be quantified at this time.

Project Title: H Street Storm Drain

Project #: C500904

This project is located along 5th, 6th, and “H” streets in the Southwest area of Petaluma. No storm drains presently exist in this residential area, and the streets are inadequate to convey the flows from a 10-year frequency storm. The project would connect to the existing storm drain system on 6th Street and consists of the installation of approximately 2600 linear feet of concrete pipe storm drain, ranging in size from 18 to 30 inches in diameter. Appurtenant facilities include 3 manholes and 12 inlets.

Planning and design of the storm drain system will be completed in FY 2005-2006. Construction is scheduled for FY 2006-2007.



City of Petaluma, California
 Fiscal Year 2006 Budget

H Street Storm Drain

C500904

USES (dollars in \$000)	Prior	Total Appro.		06-07	07-08	08-09	09-10	Est. Total
	Years	05-06	thru 05-06					
55011 CIP Intragovernment Overhead	\$ 9	\$ -	\$ 9	\$ 73	\$ -	\$ -	\$ -	\$ 82
54153 Administration	-	-	-	-	-	-	-	-
54150 Planning and Environmental Services	26	-	26	-	-	-	-	26
54110 Design Services	150	-	150	-	-	-	-	150
54120 Legal Counsel	-	-	-	-	-	-	-	-
62110 Land and Easements	-	-	-	-	-	-	-	-
54152 Construction Management Services	-	-	-	156	-	-	-	156
54151 Construction Contracts	-	-	-	1,300	-	-	-	1,300
57310 Contingency	-	-	-	-	-	-	-	-
TOTAL	\$ 185	\$ -	\$ 185	\$ 1,529	\$ -	\$ -	\$ -	\$ 1,714

SOURCES (dollars in \$000)	Prior	Total Appro.		06-07	07-08	08-09	09-10	Est. Total
	Years	05-06	thru 05-06					
Storm Drainage Impact Fees	\$ 9	\$ -	\$ 9	\$ 73	\$ -	\$ -	\$ -	\$ 82
SCWA Zone 2A Assessments	176	-	176	1,456	-	-	-	1,632
TOTAL	\$ 185	\$ -	\$ 185	\$ 1,529	\$ -	\$ -	\$ -	\$ 1,714

FUTURE MAINTENANCE OF CAPITAL IMPROVEMENT PROJECT

This project will require ongoing maintenance, which will require future allocations from the Waste Water fund. This fund is self-supporting through user fees.

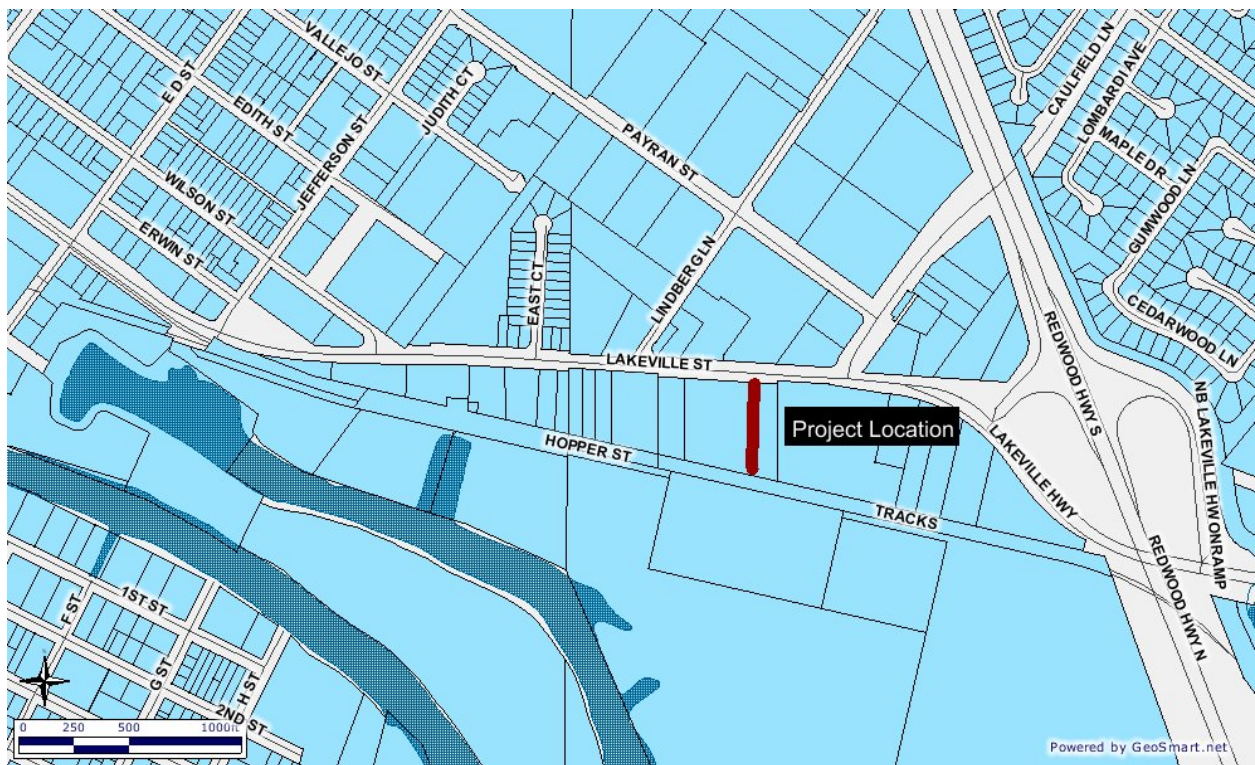
CALCULATION OF FUTURE SAVINGS

No future savings are anticipated. This project will provide new sources of drainage in the project area.

Project Title: Lakeville Channel Improvements

Project #: C500705

The City currently owns and maintains an open drainage ditch at 960 Lakeville Street. The ditch conveys storm water runoff from Lakeville Street and the surrounding area into an adjacent channel. Maintaining adequate flow capacity of this ditch is exacerbated by the growth of cattails. This project will clean out the ditch and install approximately 500 linear feet of pipe.



City of Petaluma, California
 Fiscal Year 2006 Budget

Lakeville Channel Improvement C500705

USES (dollars in \$000)	Prior	Total Appro.		06-07	07-08	08-09	09-10	Est. Total
	Years	05-06	thru 05-06					
55011 CIP Intragovernment Overhead	\$ 10	\$ -	\$ 10	\$ -	\$ -	\$ -	\$ -	\$ 10
54153 Administration	-	-	-	-	-	-	-	-
54150 Planning and Environmental Services	10	-	10	-	-	-	-	10
54110 Design Services	-	5	5	-	-	-	-	5
54120 Legal Counsel	-	-	-	-	-	-	-	-
62110 Land and Easements	-	-	-	-	-	-	-	-
54152 Construction Management Services	15	-	15	-	-	-	-	15
54151 Construction Contracts	170	-	170	-	-	-	-	170
57310 Contingency	5	-	5	-	-	-	-	5
TOTAL	\$ 210	\$ 5	\$ 215	\$ -	\$ -	\$ -	\$ -	\$ 215

SOURCES (dollars in \$000)	Prior	Total Appro.		06-07	07-08	08-09	09-10	Est. Total
	Years	05-06	thru 05-06					
Storm Drainage Impact Fees	\$ 210	\$ 5	\$ 215	\$ -	\$ -	\$ -	\$ -	\$ 215
TOTAL	\$ 210	\$ 5	\$ 215	\$ -	\$ -	\$ -	\$ -	\$ 215

FUTURE MAINTENANCE OF CAPITAL IMPROVEMENT PROJECT

City field crews will maintain the storm drainage improvements constructed through this project.

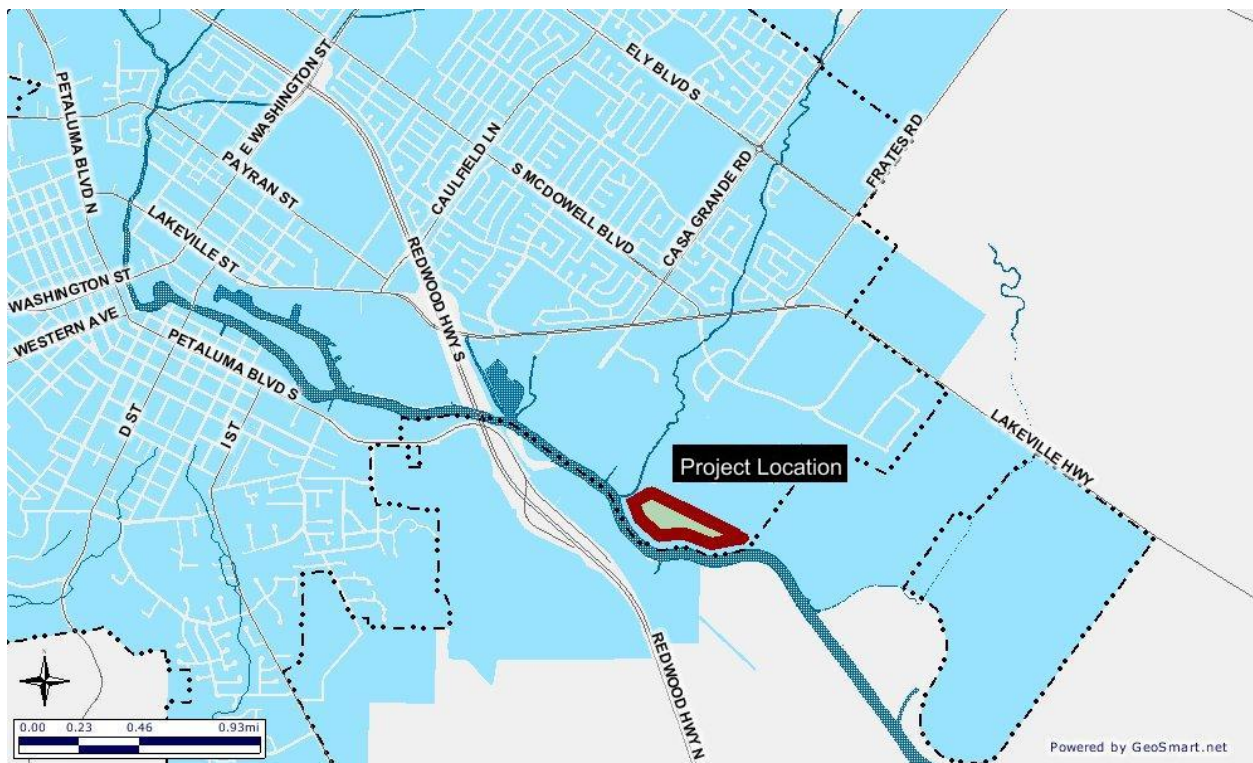
CALCULATION OF FUTURE SAVINGS

Future savings will be realized through reduced flooding and increased service life of road facilities currently subject to routine ponding of water.

Project Title: 2002 Upper Petaluma River Maintenance Dredging – Habitat Restoration

Project #: C500805

Between October 2002 and January 2003, the U.S. Army Corps of Engineers removed approximately 250,000 cubic yards of sediment from the Petaluma River. The dredged material was hydraulically mined from the river and deposited as slurry at the City's 160-acre dredge spoil disposal site. The City constructed a berm to separate a 48-acre parcel in the southern portion of the site from the northern 112-acre area. The dredge slurry was placed on the northern 112 acres of the disposal site. The 48-acre parcel, referred to as Shollenberger Marsh, was set aside as compensation for potential salt marsh harvest mouse habitat in accordance with U.S. Fish and Wildlife Service requirements. The purpose of this project is to evaluate the Shollenberger Marsh and identify methods to improve the site, including the creation of additional mouse habitat. A monitoring plan was developed and must now be implemented to address hydrology, sedimentation, erosion, and vegetation issues for the Shollenberger Marsh.



City of Petaluma, California
Fiscal Year 2006 Budget

River Habitat Restoration

C500805

USES (dollars in \$000)	Prior	Total Appro.						Est.
	Years	05-06	thru 05-06	06-07	07-08	08-09	09-10	Total
55011 CIP Intragovernment Overhead	\$ 5	\$ 5	\$ 10	\$ 25	\$ 25	\$ 25	\$ -	\$ 85
54153 Administration		-	-	-	-	-	-	-
54150 Planning and Environmental Services	70		70	-	-	-	-	70
54110 Design Services	50		50	-	-	-	-	50
54120 Legal Counsel	-		-	-	-	-	-	-
62110 Land and Easements	10		10	-	-	-	-	10
54152 Construction Management Services	-	10	10	20	20	20	-	70
54151 Construction Contracts	20	80	100	470	470	470	-	1,510
57310 Contingency	-	10	10	10	10	10	-	40
TOTAL	\$ 155	\$ 105	\$ 260	\$ 525	\$ 525	\$ 525	\$ -	\$ 1,835

SOURCES (dollars in \$000)	Prior	Total Appro.						Est.
	Years	05-06	thru 05-06	06-07	07-08	08-09	09-10	Total
Storm Drainage Impact Fees	\$ 155	\$ 105	\$ 260	\$ 525	\$ 525	\$ 525	\$ -	\$ 1,835
TOTAL	\$ 155	\$ 105	\$ 260	\$ 525	\$ 525	\$ 525	\$ -	\$ 1,835

FUTURE MAINTENANCE OF CAPITAL IMPROVEMENT PROJECT

This project will require ongoing maintenance. Funds will be provided by the Water Waste Waster Utility fund, which is funded through user fees.

CALCULATION OF FUTURE SAVINGS

Restoration of this site will result in cost savings through the use of native plant species requiring a minimum of maintenance and the improved efficiency of the City's dredge spoils disposal site.

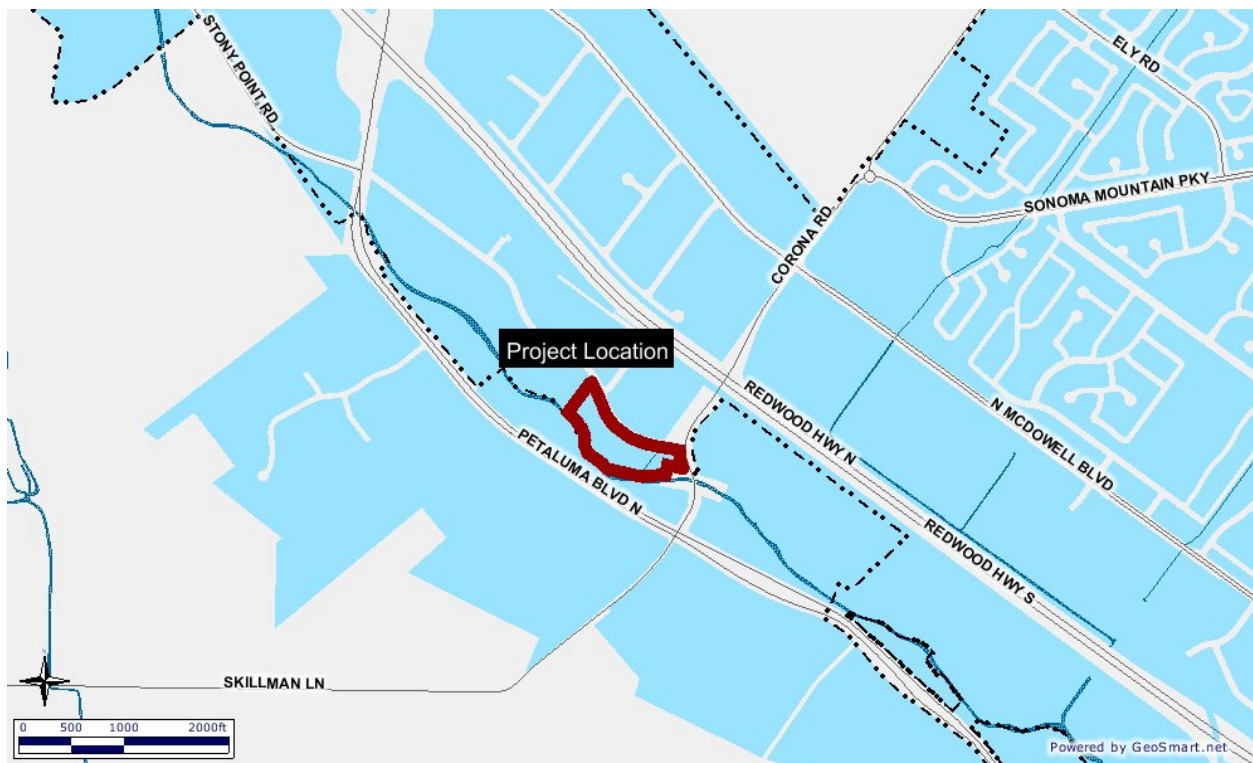
**Project Title: River Plan – Denman Reach Flood Management Project --
Phases 1 & 2**

Project #: C500303

The Denman Reach Flood Management Project is funded through the California Department of Water Resources' Urban Streams and Restoration Program. The Project's approach to flood and erosion reduction along the Petaluma River is twofold. First, restoration activities and bank stabilization/terracing will increase channel capacity, control surface runoff, and reduce sediment input into the river. Second, the project will also incorporate public access improvements along the Petaluma River in accordance with the Petaluma River Access & Enhancement Plan. The project area consists of 4 parcels totaling 9 acres originally known as the Grange, Banker, and Amaral properties. Funding of \$1,787,000 includes property acquisition (\$1,212,760) and project design, engineering, and construction.

The project schedule is as follows:

- Land acquisition – February 2002 (1 parcel) & April 2003 (3 parcels)
- Project design and permitting – 2003 through 2004
- Project construction – 2004 through 2006



City of Petaluma, California
 Fiscal Year 2006 Budget

River Plan - Denman Phase 1 & 2

C500303

USES (dollars in \$000)	Prior	Total Appr.		06-07	07-08	08-09	09-10	Est. Total
	Years	05-06	thru 05-06					
55011 CIP Intragovernment Overhead	\$ 37	\$ -	\$ 37	\$ -	\$ -	\$ -	\$ -	\$ 37
54153 Administration	81	-	81	-	-	-	-	81
54150 Planning and Environmental Services	53	-	53	-	-	-	-	53
54110 Design Services	88	-	88	-	-	-	-	88
54120 Legal Counsel	-	-	-	-	-	-	-	-
62110 Land and Easements	783	-	783	-	-	-	-	783
54152 Construction Management Services	-	-	-	-	-	-	-	-
54151 Construction Contracts	565	100	665	-	-	-	-	665
57310 Contingency	80	-	80	-	-	-	-	80
TOTAL	\$ 1,687	\$ 100	\$ 1,787	\$ -	\$ -	\$ -	\$ -	\$ 1,787

SOURCES (dollars in \$000)	Prior	Total Appr.		06-07	07-08	08-09	09-10	Est. Total
	Years	05-06	thru 05-06					
Storm Drainage Impact Fees	\$ 397	\$ 100	\$ 497	\$ -	\$ -	\$ -	\$ -	\$ 497
2001 State DWR Grant	206	-	206	-	-	-	-	206
2002 State DWR Grant	1,084	-	1,084	-	-	-	-	1,084
TOTAL	\$ 1,687	\$ 100	\$ 1,787	\$ -	\$ -	\$ -	\$ -	\$ 1,787

FUTURE MAINTENANCE OF CAPITAL IMPROVEMENT PROJECT

This project will require ongoing maintenance, which will require future allocations from the Water Resources and Conservation Department. Maintenance costs for bank stabilization measures may be recoverable or undertaken in conjunction with the Sonoma County Water Agency Zone 2A. Should the City pursue a surface water or River corridor maintenance assessment, this project would be an appropriate inclusion.

CALCULATION OF FUTURE SAVINGS

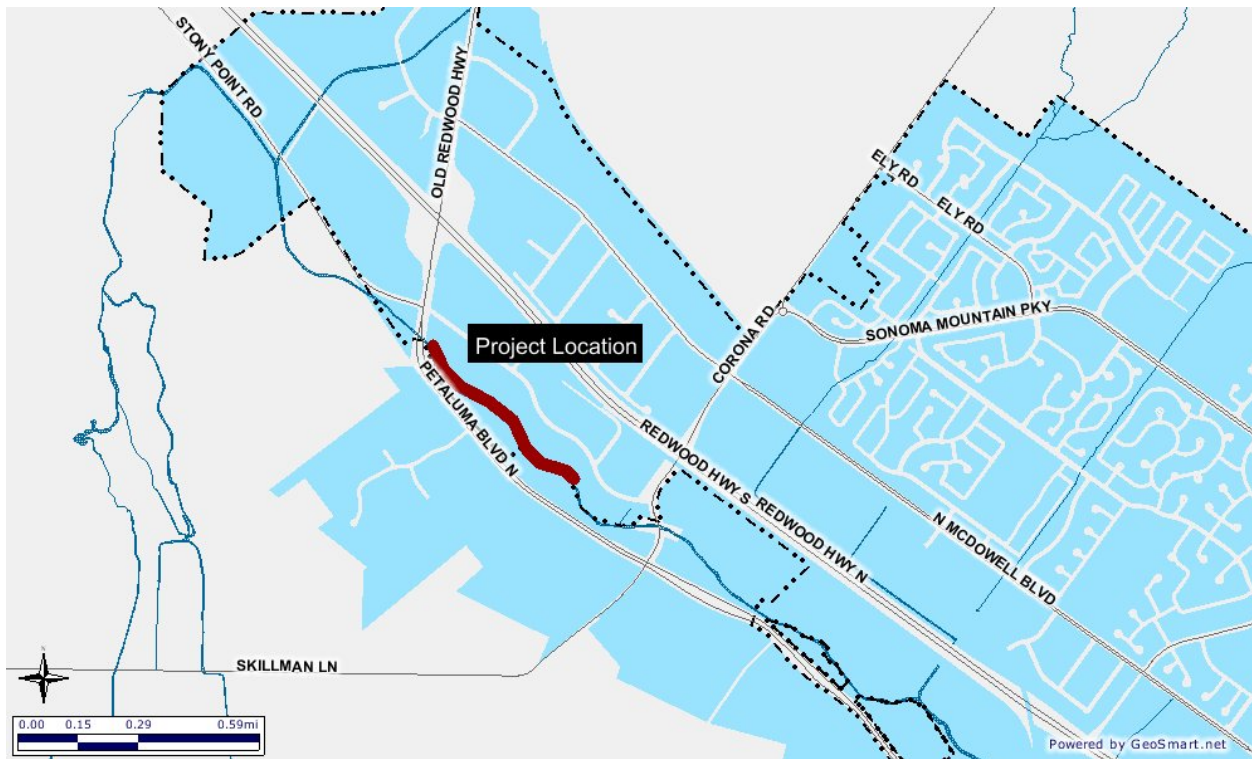
The savings to the City will be a measure of the reduced potential for flood damage and the improved water quality.

**Project Title: River Plan – Denman Reach Flood Management Project --
Future Phases**

Project #: C500b06

This project will begin implementation of the next phase of the Petaluma River Access and Enhancement Plan in the Denman Reach to create flood terraces, restore habitat, and increase channel capacity. This project will provide flood mitigation benefits, reduce bank erosion and sedimentation, and improve riparian vegetation. The scope of work includes excavation and grading, removal of non-native vegetation, and planting of native vegetation. The restoration work will incorporate the use of low-impact biogeotechnical techniques.

The City currently owns a parcel on the west bank, and the Sonoma County Water Agency owns a parcel directly within the creek bed. This project will result in the implementation of similar improvements as are being implemented in the Phases 1 & 2 Denman Reach Project. Grant funding will be obtained for construction activities.



City of Petaluma, California
Fiscal Year 2006 Budget

River Plan-Denman Future Phase

C500b06

USES (dollars in \$000)	Prior	Total Appro.						Est.
	Years	05-06	thru 05-06	06-07	07-08	08-09	09-10	Total
55011 CIP Intragovernment Overhead	\$ -	\$ -	\$ -	\$ -	\$ 3	\$ 18	\$ -	\$ 21
54153 Administration	-	-	-	-	-	-	-	-
54150 Planning and Environmental Services	-	-	-	-	50	-	-	50
54110 Design Services	-	-	-	-	-	100	-	100
54120 Legal Counsel	-	-	-	-	-	-	-	-
62110 Land and Easements	-	-	-	-	-	-	-	-
54152 Construction Management Services	-	-	-	-	-	-	-	-
54151 Construction Contracts	-	-	-	-	-	250	-	250
57310 Contingency	-	-	-	-	-	-	-	-
TOTAL	\$ -	\$ -	\$ -	\$ -	\$ 53	\$ 368	\$ -	\$ 421

SOURCES (dollars in \$000)	Prior	Total Appro.						Est.
	Years	05-06	thru 05-06	06-07	07-08	08-09	09-10	Total
Storm Drainage Impact Fees	\$ -	\$ -	\$ -	\$ -	\$ 53	\$ 368	\$ -	\$ 421
TOTAL	\$ -	\$ -	\$ -	\$ -	\$ 53	\$ 368	\$ -	\$ 421

FUTURE MAINTENANCE OF CAPITAL IMPROVEMENT PROJECT

This project will require ongoing maintenance, which will require future allocations from the Water Resources and Conservation Department. Maintenance costs for bank stabilization measures may be recoverable or undertaken in conjunction with the Sonoma County Water Agency Zone 2A. Should the City pursue a surface water or River corridor maintenance assessment, this project would be an appropriate inclusion.

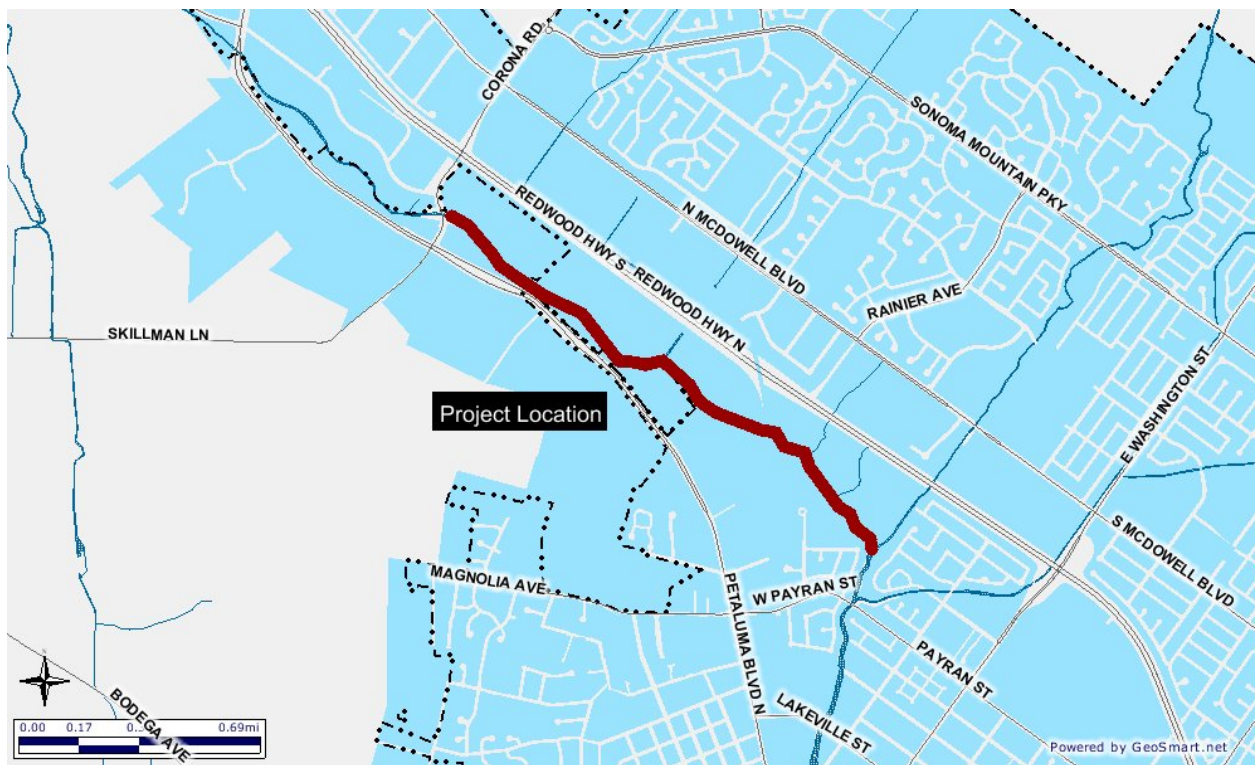
CALCULATION OF FUTURE SAVINGS

The savings to the City will be a measure of the reduced potential for flood damage and the improved water quality.

Project Title: River Plan – Corona Reach Flood Management Project

Project #: C500c06

This project involves implementation of the adopted Petaluma River Access and Enhancement Plan within the Corona Reach between Corona Road and the junction of Lynch Creek. The plan calls for the delineation of buffer, restoration, and preservation zones to enhance capacity and reduce localized flooding. Initial activities include obtaining grant funding, and working with adjacent property owners to design and implement bank stabilization and restoration projects similar to the work in the Denman Reach.



City of Petaluma, California
Fiscal Year 2006 Budget

River Plan - Corona Reach

C500c06

USES (dollars in \$000)	Prior	Total Appro.						Est.
	Years	05-06	thru 05-06	06-07	07-08	08-09	09-10	Total
55011 CIP Intragovernment Overhead	\$ -	\$ -	\$ -	\$ -	\$ 3	\$ 20	\$ 10	\$ 33
54153 Administration	-	-	-	-	-	-	-	-
54150 Planning and Environmental Services	-	-	-	-	50	-	-	50
54110 Design Services	-	-	-	-	-	200	-	200
54120 Legal Counsel	-	-	-	-	-	-	-	-
62110 Land and Easements	-	-	-	-	-	-	-	-
54152 Construction Management Services	-	-	-	-	-	-	-	-
54151 Construction Contracts	-	-	-	-	-	200	200	400
57310 Contingency	-	-	-	-	-	-	-	-
TOTAL	\$ -	\$ -	\$ -	\$ -	\$ 53	\$ 420	\$ 210	\$ 683

SOURCES (dollars in \$000)	Prior	Total Appro.						Est.
	Years	05-06	thru 05-06	06-07	07-08	08-09	09-10	Total
Storm Drainage Impact Fees	\$ -	\$ -	\$ -	\$ -	\$ 53	\$ 420	\$ 210	\$ 683
TOTAL	\$ -	\$ -	\$ -	\$ -	\$ 53	\$ 420	\$ 210	\$ 683

FUTURE MAINTENANCE OF CAPITAL IMPROVEMENT PROJECT

This project will require ongoing maintenance, which will require future allocations from the Water Resources and Conservation Department. Maintenance costs for bank stabilization measures may be recoverable or undertaken in conjunction with the Sonoma County Water Agency Zone 2A. Should the City pursue a surface water or River corridor maintenance assessment, this project would be an appropriate inclusion.

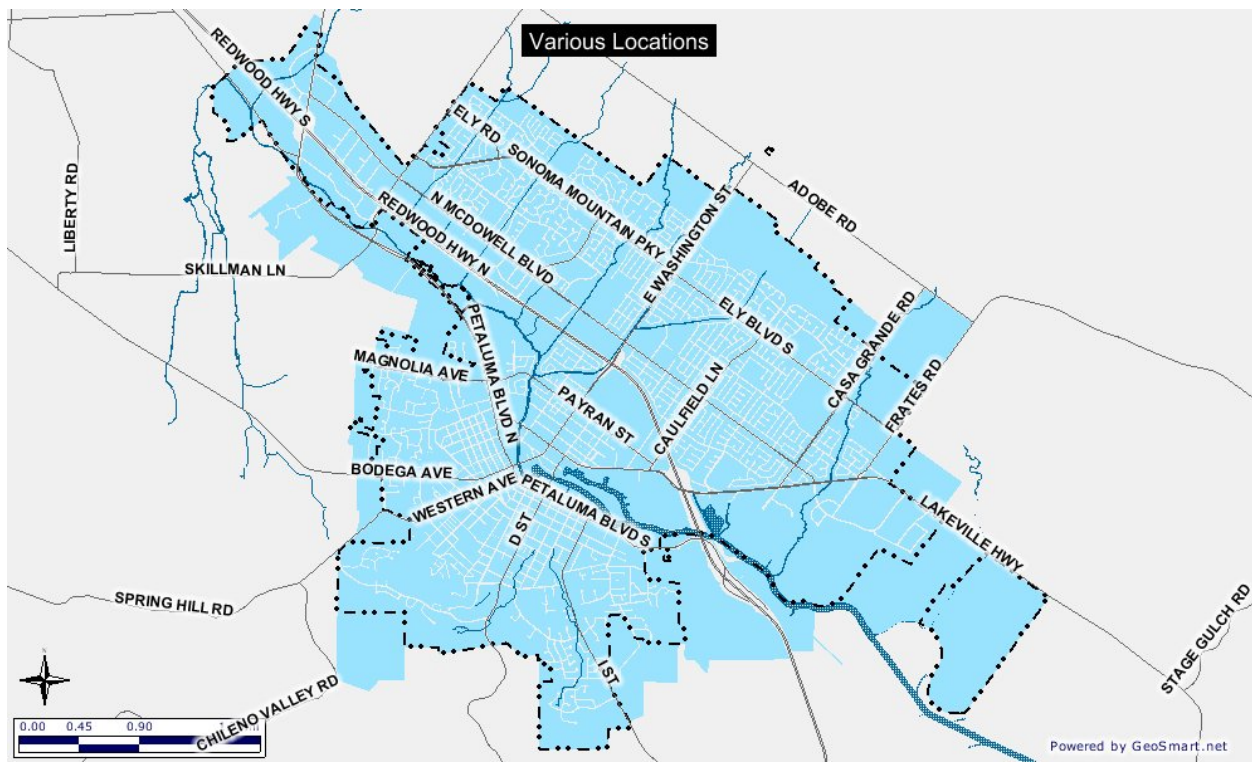
CALCULATION OF FUTURE SAVINGS

The savings to the City will be a measure of the reduced potential for flood damage and the improved water quality.

Project Title: Drainage Facility Improvements

Project #: C500804

Various streets and intersections throughout the City are susceptible to flooding during heavy downpours due to the lack of adequate drainage facilities. This project will annually identify and prioritize the necessary storm drain improvements to reduce or eliminate ponding water. Specific locations and improvements will be determined as part of the detailed design. The construction timetable will depend on local considerations such as street paving and repair schedules, construction of other utilities, redevelopment projects, and development activity.



City of Petaluma, California
Fiscal Year 2006 Budget

Flood Drainage Improvements C500804

USES (dollars in \$000)	Prior	Total Appro.						Est.
	Years	05-06	thru 05-06	06-07	07-08	08-09	09-10	Total
55011 CIP Intragovernment Overhead	\$ 3	\$ 3	\$ 6	\$ -	\$ 30	\$ 15	\$ 15	\$ 66
54153 Administration	-	-	-	-	-	-	-	-
54150 Planning and Environmental Services	-	-	-	-	-	-	-	-
54110 Design Services	50	-	50	50	50	50	50	250
54120 Legal Counsel	-	-	-	-	-	-	-	-
62110 Land and Easements	-	-	-	-	-	-	-	-
54152 Construction Management Services	-	10	10	-	-	-	-	10
54151 Construction Contracts	-	50	50	250	250	250	250	1,050
57310 Contingency	-	10	10	-	-	-	-	10
TOTAL	\$ 53	\$ 73	\$ 126	\$ 300	\$ 330	\$ 315	\$ 315	\$ 1,386

SOURCES (dollars in \$000)	Prior	Total Appro.						Est.
	Years	05-06	thru 05-06	06-07	07-08	08-09	09-10	Total
Storm Drainage Impact Fees	\$ 53	\$ 73	\$ 126	\$ 300	\$ 330	\$ 315	\$ 315	\$ 1,386
TOTAL	\$ 53	\$ 73	\$ 126	\$ 300	\$ 330	\$ 315	\$ 315	\$ 1,386

FUTURE MAINTENANCE OF CAPITAL IMPROVEMENT PROJECT

City field crews will maintain the storm drainage improvements constructed through this project.

CALCULATION OF FUTURE SAVINGS

Future savings will be realized through reduced flooding and increased service life of road facilities currently subject to routine ponding of water.

