



**Community Development Department**  
11 English Street  
Petaluma, CA 94952  
<http://cityofpetaluma.net>

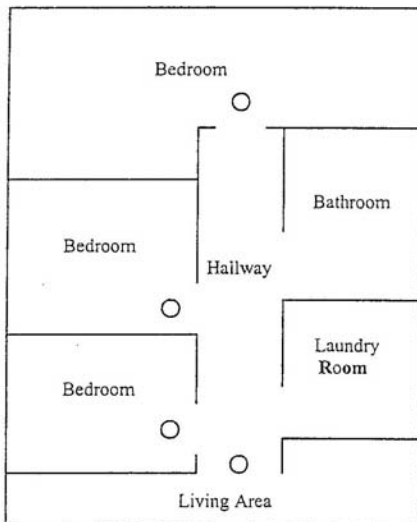
Building Division  
Phone: (707) 778-4301  
Fax: (707) 778-4498  
To schedule inspections: (707) 778-4479  
Email: [cdd@ci.petaluma.ca.us](mailto:cdd@ci.petaluma.ca.us)

## Smoke Detector Locations

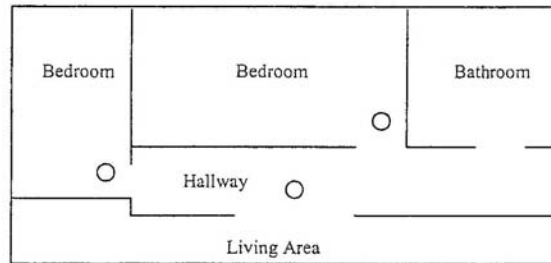
**Note:** UL Laboratories and the State Fire Marshal must label smoke detectors. Existing permanently wired smoke detectors must be replaced in kind. They are not permitted to be replaced with battery-powered units.

The installation locations spotted on the typical floor plans are only a general guide. Cathedral ceilings and the locations of existing fixtures, hallway doors, etc., can affect the proper location of smoke detectors. Contact the Building Division at (707) 778-4301 for any questions you may have for special circumstances.

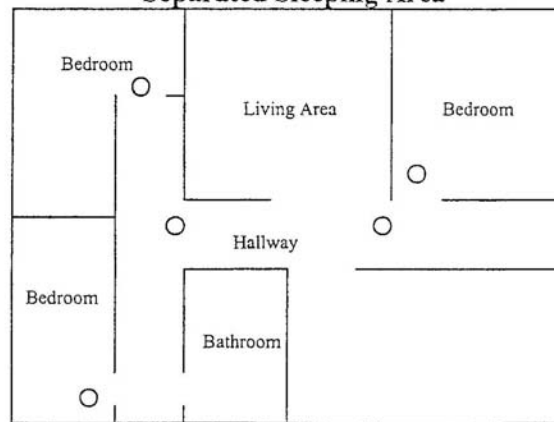
**Corridor Hallway**



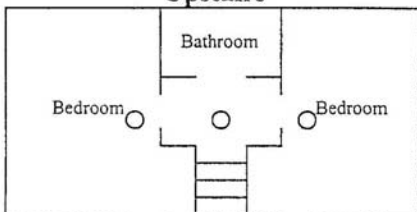
**Split Hallway**



**Separated Sleeping Area**



**Upstairs**



Stairs

**Legend**

○ Smoke Detector