

FEMA PROJECTS FY 2007-2008

**FEMA PERMANENT WORK PROJECTS - WINTER STORMS 2005 AND SPRING STORMS 2006 (FUND 3850) FY 07-08
 PROJECT SUMMARY**

		Prior Years	07-08	Total Appro. thru 07-08	08-09	09-10	10-11	11-12	Est. Total
PROJECTS (dollars in \$000)									
F070006	PW Roads - Stony Point	\$ -	\$ 2	\$ 2	\$ -	\$ -	\$ -	\$ -	\$ 2
F128006	PW Roads - Asphalt Separation	-	395	395	-	-	-	-	395
F070406	PW Bridge - Factory Outlet	APPEAL	-	-	-	-	-	-	-
F071106	PW Streets - Stony Pt. Rd. Shoulder	-	14	14	-	-	-	-	14
F095406	PW Soundwalls-Caul/E.Wash.	-	75	75	-	-	-	-	75
F096106	PW Bridge - Balshaw	APPEAL	-	-	-	-	-	-	-
F127706	PW Rip-Rap - Twin Bridges	-	26	26	-	-	-	-	26
F128506	PW Flood Terr -Industrial Ave	APPEAL	-	-	-	-	-	-	-
F128906	PW Roads - Asphalt Separation	VOID	-	-	-	-	-	-	-
F129306	PW Roads - Asphalt Separation	-	80	80	-	-	-	-	80
F130406	PW Rip-Rap - Stony Pt. brdg	-	35	35	-	-	-	-	35
F228506	PW Roads - Asphalt Separation	-	815	815	-	-	-	-	815
F334006	PW Traffic Signal Controller	-	12	12	-	-	-	-	12
F334906	PW Road Repair Citywide	APPEAL	-	-	-	-	-	-	-
F335106	PW Roads Citywide FHWA	DENIED	-	-	-	-	-	-	-
F068306	PW Sidewalk-Prospect/Kentucky	-	4	4	-	-	-	-	4
F073106	PW Roads - Ely at Spanish Bay S.	-	47	47	-	-	-	-	47
F073206	PW Roads - S. McDowell at Corp. Cir	APPEAL	-	-	-	-	-	-	-
F073306	PW Roads-Casa Grande-Henry-S. Mc	APPEAL	-	-	-	-	-	-	-
F073606	PW Roads - Maria Dr.	APPEAL	-	-	-	-	-	-	-
F073706	PW Roads - Ely at Arrowhead	-	64	64	-	-	-	-	64
F073906	PW Roads - Casa Grande (Sartori/Hnry)	-	38	38	-	-	-	-	38
F074006	PW Roads - McDowell (Casa/Bond)	-	32	32	-	-	-	-	32
F074106	PW Roads - Pineview	-	62	62	-	-	-	-	62
F074406	PW Roads - Maria	-	9	9	-	-	-	-	9
F083906	PW Roads - Garfield	APPEAL	-	-	-	-	-	-	-
F084206	PW Roads - I St. (Kingswood)	-	10	10	-	-	-	-	10
		-	-	-	-	-	-	-	-
	TOTAL	\$ -	\$ 1,720	\$ 1,720	\$ -	\$ -	\$ -	\$ -	\$ 1,720
SOURCES (dollars \$000)									
	State Grant-OES	\$ -	\$ 430	\$ 430	\$ -	\$ -	\$ -	\$ -	\$ 430
	Fed Grant-FEMA	-	1,290	1,290	-	-	-	-	1,290
	Undetermined*	-	-	-	-	-	-	-	-
	TOTAL	\$ -	\$ 1,720	\$ 1,720	\$ -	\$ -	\$ -	\$ -	\$ 1,720

**Project Title: Federal Emergency Management Agency (FEMA)/Office of
Emergency Services (OES) Program**

Project #: FEMA/OES Grant Program

The objective of the Federal Emergency Management Agency's (FEMA) Public Assistance (PA) Grant Program is to provide assistance to states, local governments, and certain non-profit organizations to alleviate suffering and hardship resulting from major disasters or emergencies declared by the President. Recently, two such disasters were declared which included the City of Petaluma. The first declaration was on February 3, 2006 (FEMA-1628-DR), as a result of severe storms, flooding, mudslides, and landslides, which occurred between December 17, 2005, through and including January 3, 2006. The second declaration was on June 5, 2006 (FEMA-1646-DR), based on severe storms and flooding between March 29, 2006, through and including April 16, 2006.

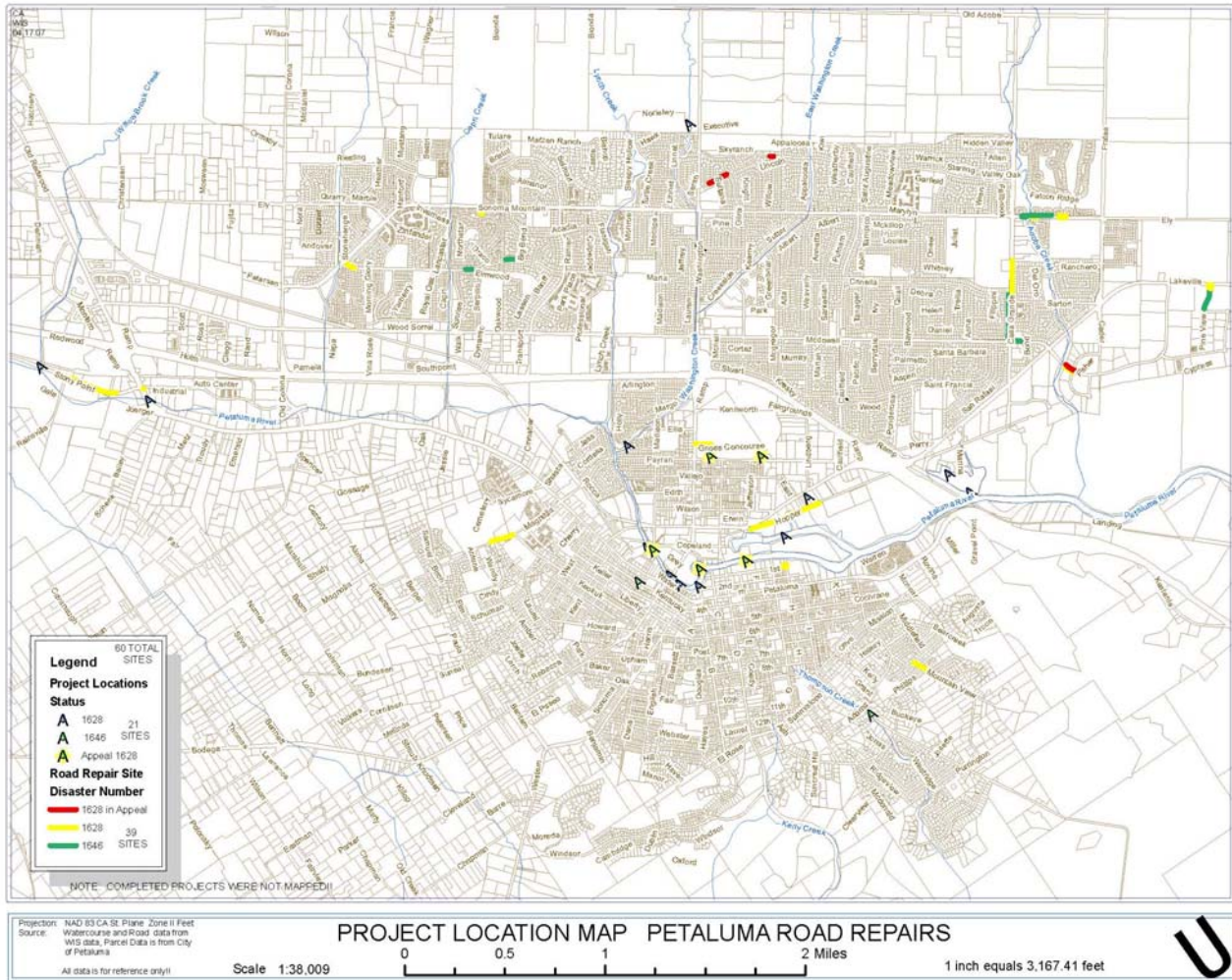
Through the PA Program, FEMA provides supplemental Federal disaster grant assistance for the repair, replacement, or restoration of disaster-damaged, publicly owned facilities and the facilities of certain private non-profit organizations. The Federal share of assistance is not less than 75% of the eligible cost for emergency measures and permanent restoration. The grantee (usually the State) determines how the non-Federal share (up to 25%) is split with the subgrantees (eligible applicants).

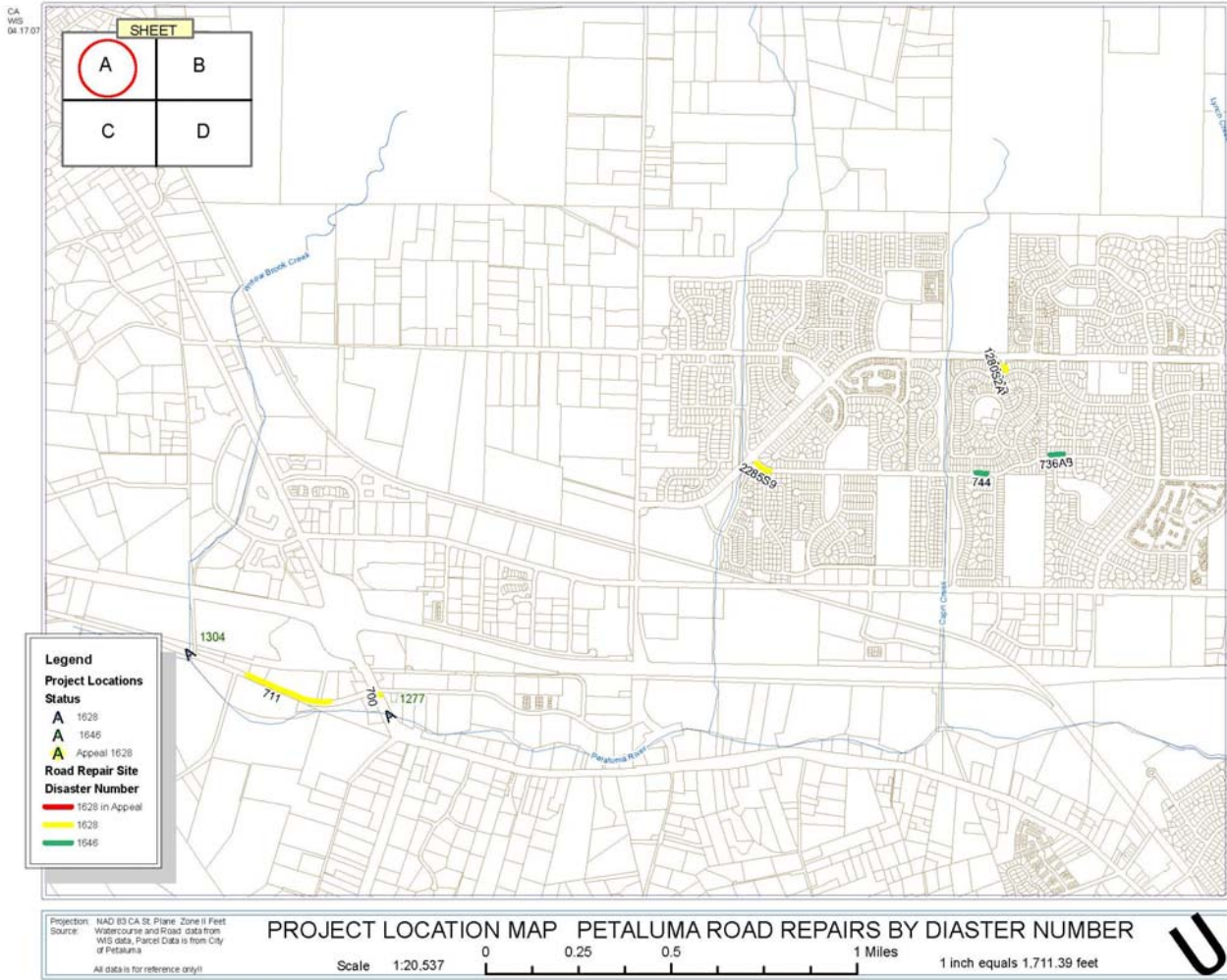
In the case of both FEMA-16280-DR and FEMA-1646-DR, the Federal share is 75% and the State share is 25%.

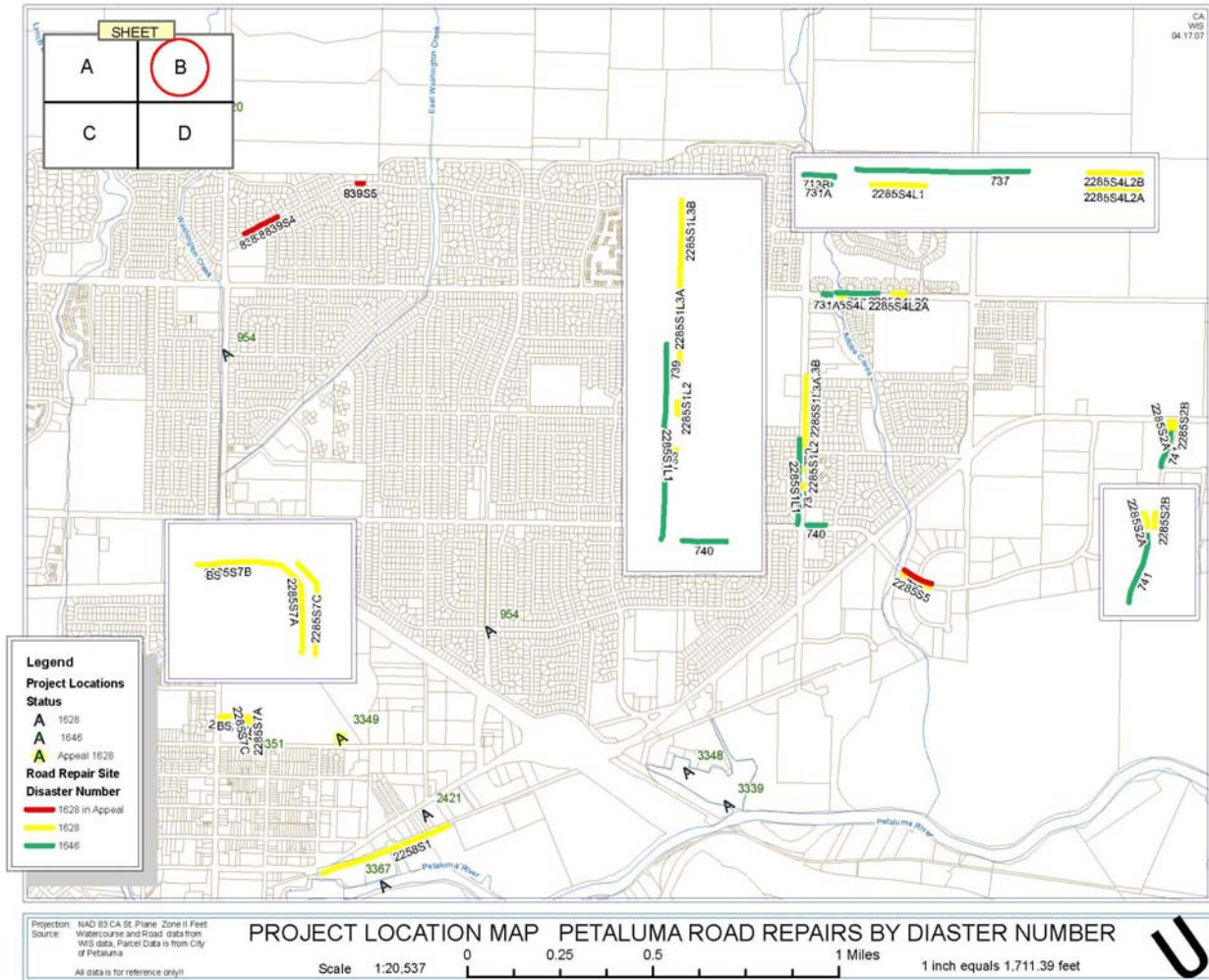
During and after the storm events, crews surveyed the City for disaster related problems (e.g. missing rip-rap, debris in the Turning Basin and Petaluma River, street failures, etc.). Shortly after this survey the City, FEMA and OES representatives reviewed these sites. Upon concurrence with FEMA and OES, the disaster-related sites were written up as project worksheets (PW), which were turned into the main offices of FEMA and OES for approval. The dollar amount shown in the budget for FY 07-08 reflects the actual funds received to date, and at the mid-year budget review, these dollar amounts will be amended to reflect the current amounts received. The actual amounts approved by FEMA are shown for the approved projects up to the amount that has been received to date (estimated project costs were not used so as not to inflate the projected revenue and/or expenditures in FY 07-08).

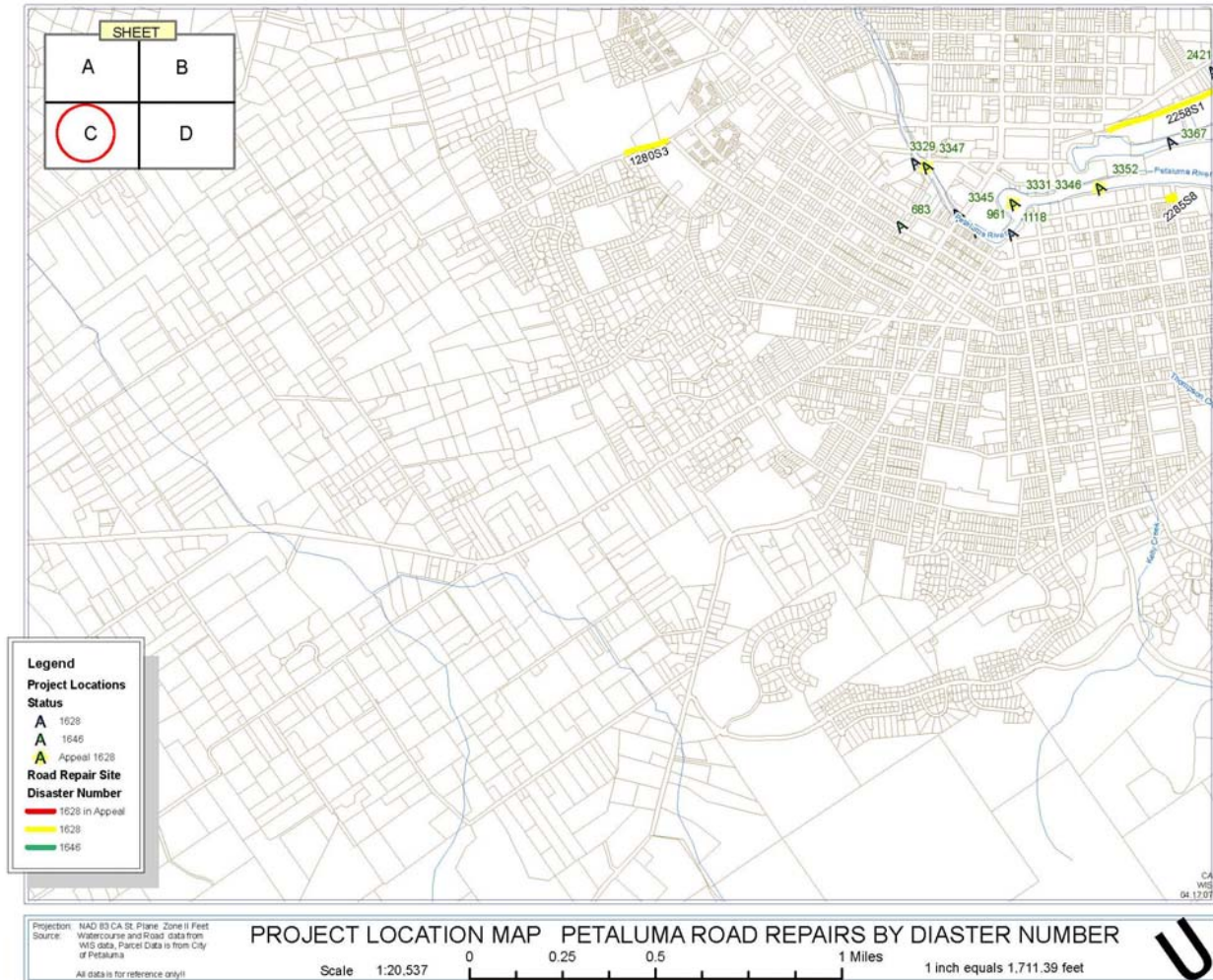
CALCULATION OF FUTURE SAVINGS

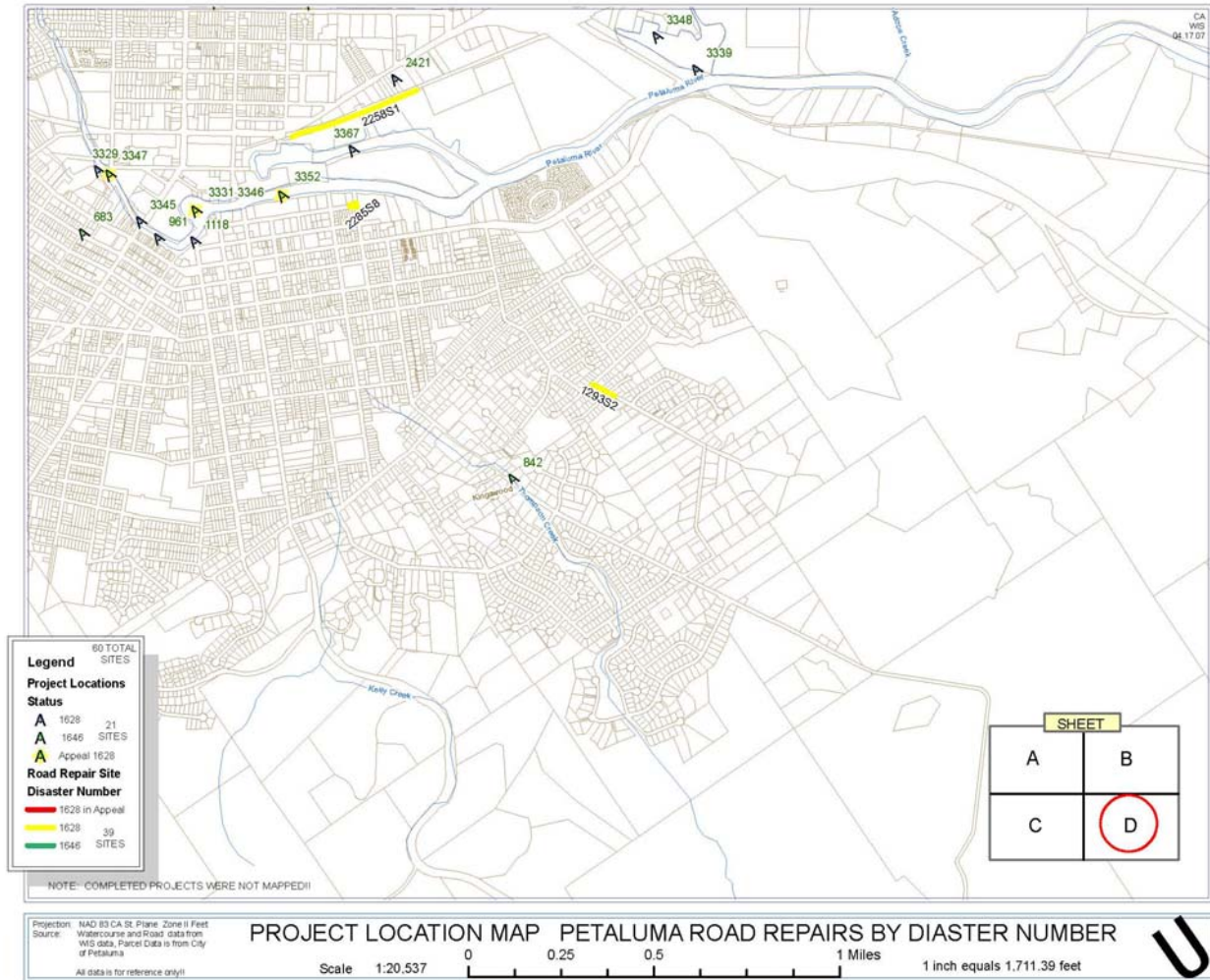
In every case, the FEMA improvements will lower the current level of operating maintenance because the City will have new infrastructure replacing old, used infrastructure.













A foggy morning on the Petaluma River. A variety of manufacturing businesses are located along the river and still use barges to delivery its products throughout the San Francisco Bay Area, and as far east as Sacramento.