

NEWS RELEASE

For Immediate Release/Broadcast

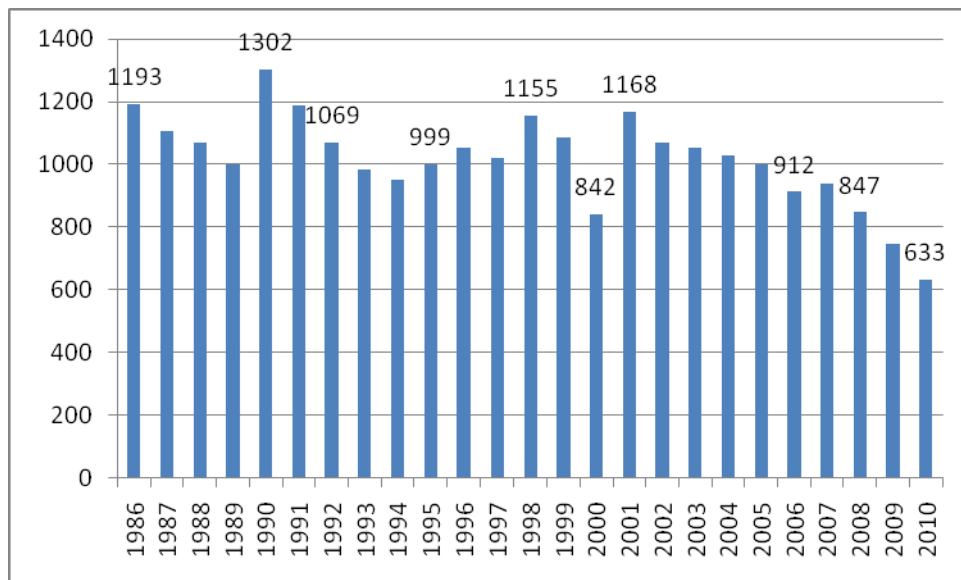
Friday, February 11, 2011

Petaluma Traffic Collisions Set New Low Record Engineering, Enforcement, and Education Efforts Working as Traffic Crashes Drop More Than 36% in Last 5 Years

The 2010 annual review of traffic safety in Petaluma is showing promising results that enforcement of vehicle code violations, effective traffic engineering solutions, and a strong public awareness and education campaign are working to improve safety on the streets of Petaluma. The annual review assists enforcement officers, engineers, and City policy makers in identifying collision trends and locations so that enforcement, engineering, and education solutions and resources can be used to reduce the crashes.

Collisions in 2010 have set an all new record low not seen in Petaluma since before 1986 when the Department began to maintain annual traffic collision statistics. There were 633 traffic collisions last year, down more than 36% from the yearly average of almost 1000 collisions just 5 years ago.

City of Petaluma Traffic Collisions 1986-2010



Collision History 1986 to 2010

Since 1986, there have been 25,410 collisions. Of those 40 involved a fatality (.1%), 6,178 involved an injury (25%), and 19,192 involved property damage only (75%). Since 1986, the yearly average number of collisions has been 1,104. In the last 5 years that average has dropped to 846.

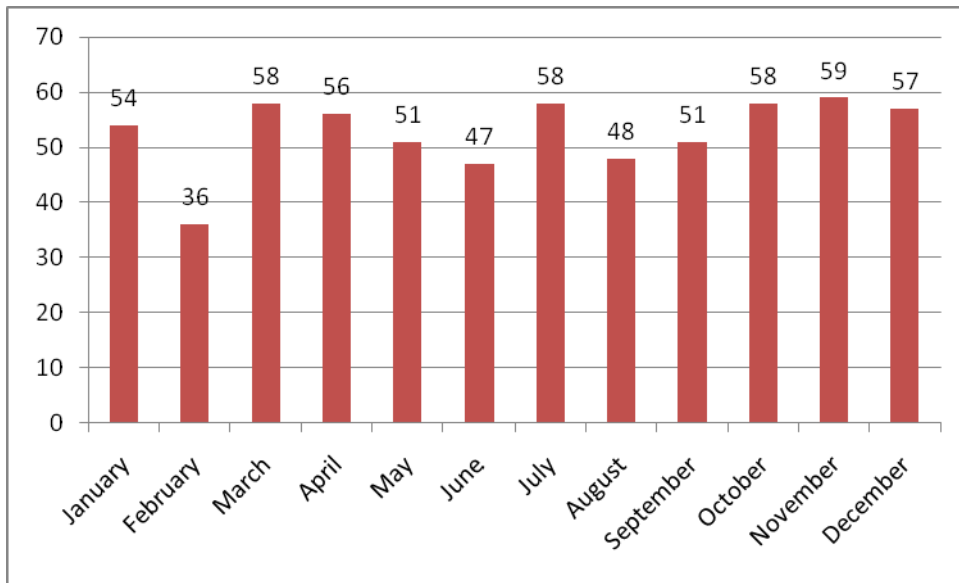
2010 Collision Summary

In 2010 a total of 633 traffic collisions occurred on City streets. Of those none involved a fatality, 188 involved an injury, and 445 involved property damage only. Collisions in 2010 dropped 15% from 2009 where 748 collisions occurred.

Fatal collisions have experienced the most significant reduction. In 2008, three people were killed in traffic collisions, one included a DUI fatality. In 2009 there were no fatal traffic collisions and the same remained true for 2010. The last fatal collision in Petaluma occurred in November 2008 when a DUI driver collided with a tree on North McDowell Blvd and killed a passenger in the front seat.

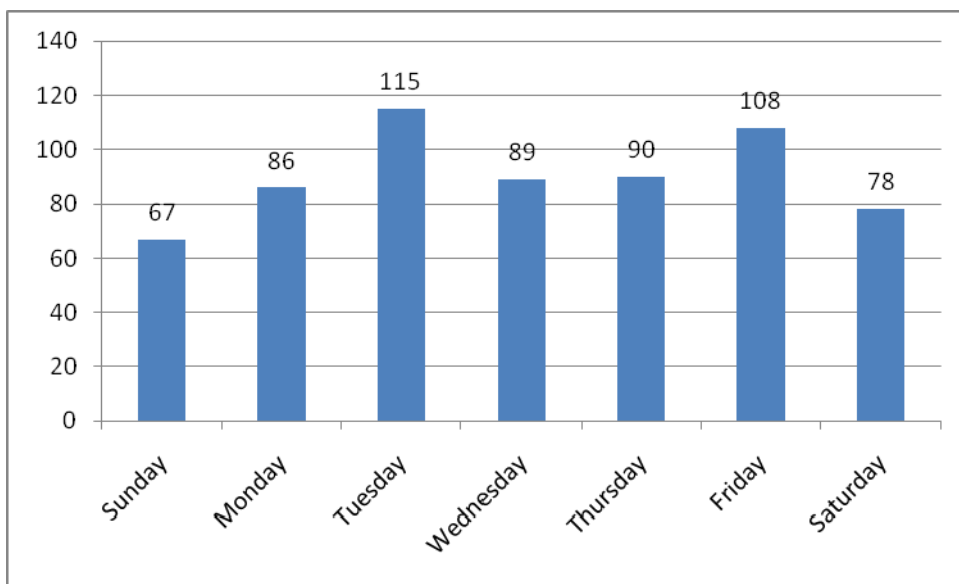
Injury collisions in 2010 continued their decline as well. Injury collisions dropped 9% from 207 in 2009 to 188 in 2010. The number of injury collisions in 2010 is all time low since 1986 where the yearly average has been 268.

2010 Collisions by Month



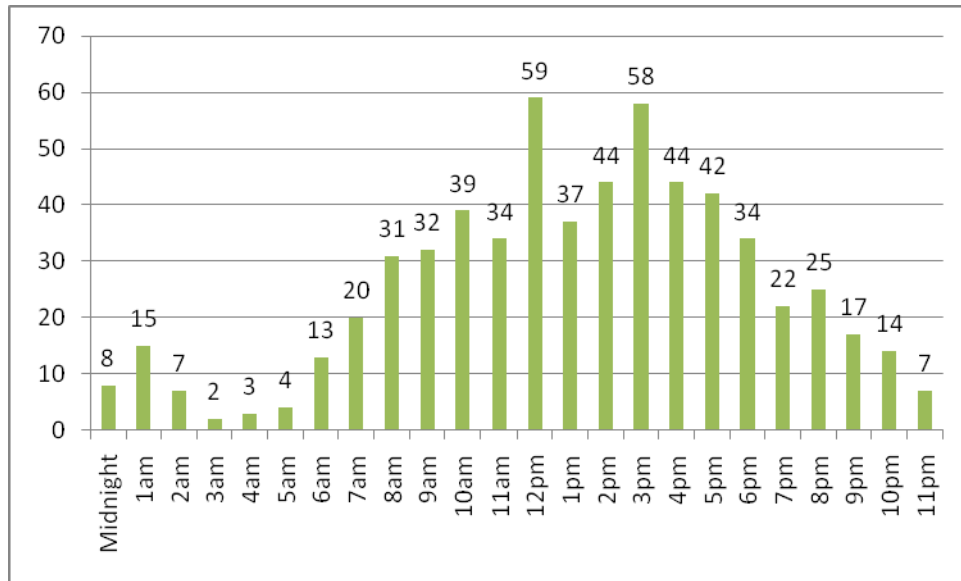
The top 5 months of the year for collisions in 2010 were November, March, July, October, and December.

2010 Collisions by Day of Week



The top 5 days of the week for collisions in 2010 were Tuesday, Friday, Thursday, Wednesday, and Monday.

2010 Collisions by Hour of the Day



The top 5 hours of the day for collisions in 2010 were hours of 12pm, 3pm, 2pm, 4pm, and 5pm.

2010 Collisions by Cause

Primary Collision Factor (Cause)	2010 Collisions	Percentage of Collisions
1. Auto Right of Way	118	19.93%
2. Unsafe Speed	115	19.43%
3. Improper Turning	96	16.22%
4. Unsafe Starting or Backing	50	8.45%
5. Driving Under the Influence	49	8.28%
6. Unknown Cause	43	7.26%
7. Other Improper Driving	28	4.73%
8. Traffic Signals and Signs	19	3.21%
9. Unsafe Lane Change	16	2.70%
10. Pedestrian Right-of-Way	12	2.03%

Most of the injuries occurred in speed related collisions, followed by Auto Right of Way and Traffic Signs and Signals.

Auto Right-of-Way violations took over as the number 1 cause of collisions in Petaluma in 2010. Since

2010 Top 10 Collision Intersections

Intersection	Collisions
1. McDowell Blvd at East Washington Street	12
2. East Washington Street at Sonoma Mtn Parkway	10
3. Petaluma Blvd at Western Avenue	7
4. East Washington Street at Lakeville Street	6
5. Lakeville Hwy at Casa Grande Road	6
6. Keller Street at Washington Street	5
7. North McDowell Blvd at Redwood Way	5
8. Petaluma Blvd North at B Street	5
9. South McDowell Blvd at Baywood Drive	5

10. Sonoma Mountain Parkway at Ely Road	5
Sonoma Mountain Parkway at Rainier Circle	5

At the number 1 location at North McDowell Blvd and East Washington Street the following factors were identified:

- 63% of the collisions involved rear-end crashes and 18% involved sideswipe crashes.
- 100% of the collisions occurred during the day time hours.
- 27% involved injuries and 81% involved property damage only.
- 64% of the collisions were caused by unsafe speed.

At the number 2 location at East Washington Street and Sonoma Mountain Parkway the following factors were identified:

- 30% of the collision involved head-on and rear-end crashes, and 40% involved a broadside crashes.
- 80% occurred during daytime hours and 20% occurred during nighttime hours.
- 70% involved injuries and 30% involved property damage only.
- 50% of the crashes were caused by left turn right-of-way violations on a solid green light.

2010 Top 5 Collision Mid-Block Locations

Intersection	Collisions
1. Petaluma Blvd from Western Avenue to Washington Street	7
2. Petaluma Blvd from US101 to Stony Point Road	4
3. N. McDowell Blvd from Lauren Drive to East Madison St.	4
4. Payran Street from Caulfield Lane to Lindberg Lane	3
5. East Washington Street from Maria Dr to McDowell Blvd	3

Prepared By: **Sergeant Ken Savano**
Petaluma Police Department
Special Operations – Traffic Unit
707.481.3567 mobile
707.778.4596 office
OTS Projects AL1197, AL0982, CT11313 and SC11313

###